



Wise Package Studio®

QUALITY ASSURANCE

BENEFITS

- > Quality assurance is the only way to ensure reliable, error-free deployments
- > Quickly prepare patches and applications
- > Minimize impact on end users
- > Successfully deploy the first time
- > Substantially reduce help desk costs

Application and patch deployments are much more successful when comprehensive quality assurance activities are performed. Even if applications and patches are properly packaged and customized, they need to be thoroughly tested prior to deployment. Quality assurance is the only way to reduce rollout risk and ensure applications and patches deploy error free.

Despite the value of quality assurance, many organizations believe it is time consuming and expensive. Even experienced packagers can find it difficult to know how to properly test a package. Now, Wise Package Studio® Quality Assurance provides a complete set of automated testing tools that make testing in the real-world and lab environment fast, accurate and economical.

WHAT DOES YOUR ORGANIZATION GAIN FROM QUALITY ASSURANCE?

Testing installations in a lab environment is a good starting point for quality assurance. The best lab testing incorporates a structured, systematic test plan. With the lab environment, however, it is impossible to simulate every potential desktop configuration, which still leaves deployments open to risk of failure.

Wise Package Studio Quality Assurance is the only product offering a comprehensive model covering all aspects of quality assurance, including an easy and risk-free way to test in the real-world environment. The Quality Assurance module is based on multiple testing activities and offers exclusive benefits.

- > Successfully deploy applications and patches the first time, dramatically reducing the risk of rollouts
- > Minimize testing and deployment impact on systems and end users
- > Customize testing activities to meet your corporate standards and production environment
- > Quickly prepare deployments with streamlined, standardized testing procedures

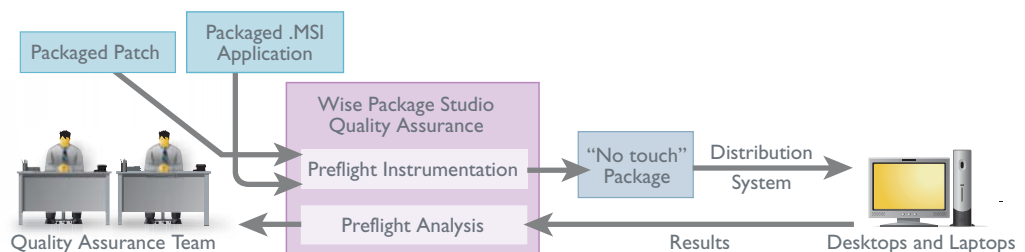
- > Substantially reduce help desk costs due to fewer errors
- > Markedly increase IT efficiency with structured testing environments and plans

HOW DOES QUALITY ASSURANCE WORK?

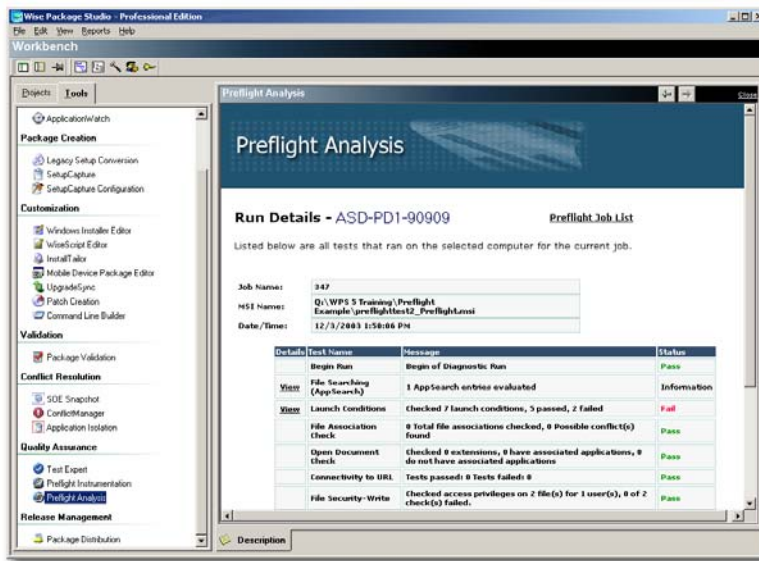
Quality Assurance provides structured test plans and tools that allow you to test packaged applications and patches in the lab and production environment. Quality Assurance helps you conduct the appropriate level of testing with:

Preflight Deployment™, a revolutionary technology that allows you to determine—before deployment—if an installation will succeed or fail by testing it in your real-world environment. With Preflight Deployment, you can see why deployments fail on specific machines without disrupting end users or endangering your production environment. How is this accomplished?

- 1 **Preflight instrumentation** takes the .MSI package to be tested and creates a “zero touch,” or simulation, package that tests appropriate conditions for the application
- 2 Your existing distribution system is used to push out the package
- 3 The zero touch package simulates the installation on the actual destination machine without making any changes to the machine, and then reports results back to a central server
- 4 **Preflight Analysis** displays a variety of test reports, from high level analysis to detailed results for specific errors or specific PCs



Preflight Deployment with Wise Package Studio Quality Assurance



Preflight Deployment helps you test deployments in the production environment.

Test Expert, a structured, intelligent approach to testing, automatically generates a master test plan and guides you through multiple test cases for system level package testing for applications and patches. With this tool, your packaging teams are guided step-by-step through test plans that can be customized to meet the needs of your organization. This is achieved by:

- > Verifying resources used by an application are actually included in the package, reducing the possibility of application errors after distribution
- > Validating the application uses isolated versions of shared .DLL and .OCX files
- > Identifying permission issues that could prevent end users from accessing the application
- > Producing four types of customizable test cases: installation, uninstallation, verification and execution

Custom validation rules, which can be used to validate packages against industry and corporate standards. The Package Validation tool, based on Windows 2000 validation standards, helps you identify package noncompliance in seconds by walking you through the validation process. The validation rules are fully customizable, so you can set rules such as:

- > Ensuring the package contains no hard-coded paths
- > Verifying the package does not overwrite files included in the standard operating environment

QUALITY ASSURANCE AND WISE PACKAGE STUDIO

Wise realizes the necessity of proper testing in application lifecycle management, and we developed the Quality Assurance module to help you conduct streamlined, efficient, thorough testing of applications and patches prior to deployment.

Organizations that use Quality Assurance want to ensure their teams have an easy-to-use suite of tools that cover all aspects of testing and validating.

Quality Assurance is available as part of the Wise Package Studio suite of products. Start testing your applications with Quality Assurance today. Learn more at www.altiris.com, call 734 456 2100, or contact your local reseller.